

Bleed Size - 950mm x 24mm
Finished Size - 930mm x 20mm
Safe Area - 840mm x 15mm

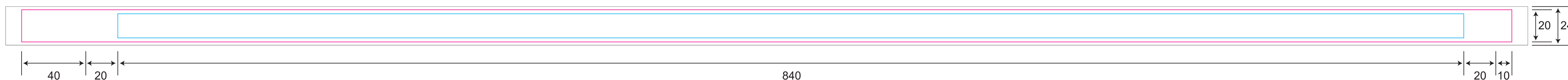
Notes

1. Files will only be accepted in this template as downloaded.
2. Your Design must allow for bleed to the correct dimensions per the guides below
3. Place your artwork in the correct layers as labelled below. We do not adjust any artwork or layers.
4. Do not change any position, component or format of this template, otherwise your design may be rejected or print incorrectly.
5. Files printed incorrectly due to incorrect setup or altered templates will not be reprinted or refunded under any circumstances.



Standard Lanyard

Outside

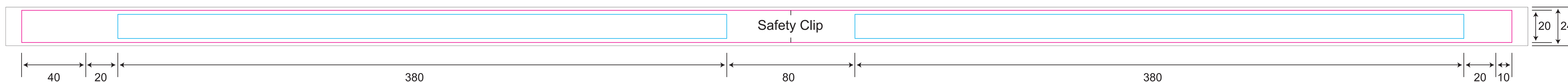


Inside



Lanyard with Safety Breakaway

Outside



Inside



Lanyard Guide and Template

info@redder4.com.au

This template will assist you in designing and ordering your full colour lanyards. On the right you will find the required template and also a few brief instructions and guidelines for creating your design ready to place your order. When using the guides in this template, do not delete the guide layers. You can turn off the layers when creating your design. Please place your design in the design layer.

Important things to know about full colour lanyards

Full Colour Lanyards cards are CMYK printed on two sides, on a white base material.

It is important to understand the design requirements for Full Colour Lanyards.

If you have large block black areas on your design, please set them to C30 M30 Y30 K100 for a rich black.

Use K100 only for text.

Important elements must be within the blue safety area indicated.

The manufacture process is not fully automated, finished sizes (length) may vary 5-10%.

Minimum Stroke is 0.3mm. Anything smaller may not print.

Minimum text size is 9pt Arial. Anything smaller may not print.

Minimum reverse text is 12pt Arial. Anything smaller may not print.

Inside is suggested to be printed matching colour and not include text or logos.

Note - we do not check these sizes prior to production. It is the designers responsibility to understand these requirements and provide accurate artwork.

Setting up and sending your file for print.

We accept Adobe Illustrator CS5 and above, or PDF files only. No Indesign, Photoshop or other files will be accepted.

When sending your file, you must have all of your design in the one document, as per this template. It is easiest for you to send your design in the template provided, as it will be more efficient to check the design and ensure a faster turnaround.

Please make sure to set your file as CMYK and ensure all fonts are outlined and images are embedded as this is standard for Print Production. If your artwork includes an image please make sure that it is of high quality, set to 300dpi only adjusted to the correct dimensions to suit the template. Image sizes should be adjusted in Photoshop before placing into your Illustrator design.

Placing Your Order

Please leave these guides on when submitting your order, our staff will remove these prior to proofing and printing. You can simply remove all the text in the grey section of the template and leave the artwork on the right hand side indicating the Bleed Size, Final Size, and Safe Area.

Once you have completed your design and are ready to go ahead with printing, simply place your order through the online system. When prompted by email, attach your design to a reply email to REDDER4. Once the file has been received, an order confirmation and online proof will be returned to you to confirm all the details of your order.

If you have any questions, please contact our design team design@redder4.com.au or give us a call on (02) 9600 8844.